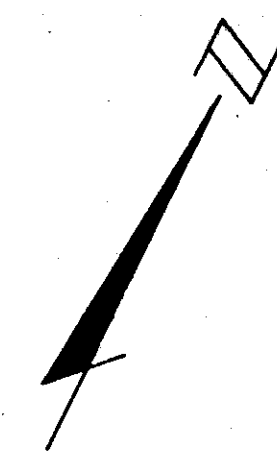
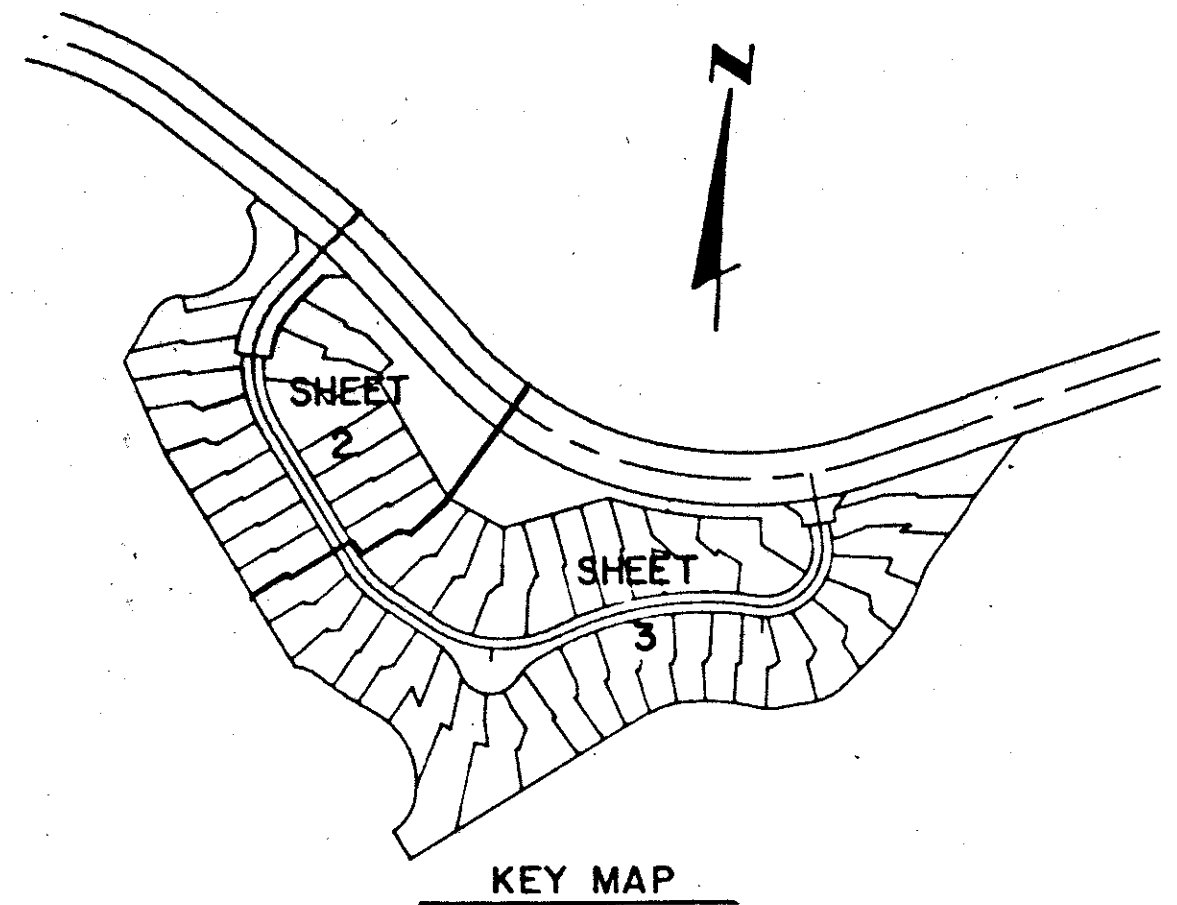
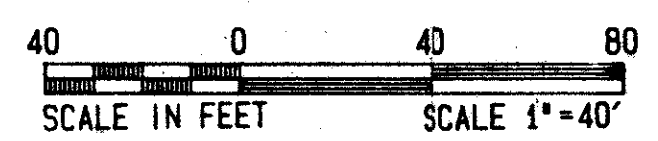


CHUKKER COVE OF PALM BEACH POLO & COUNTRY CLUB

WELLINGTON P. O. D.
IN PART OF SEC. 15, TWP. 44S, RGE. 41E
PALM BEACH COUNTY, FLORIDA
IN THREE SHEETS SHEET NO. 2

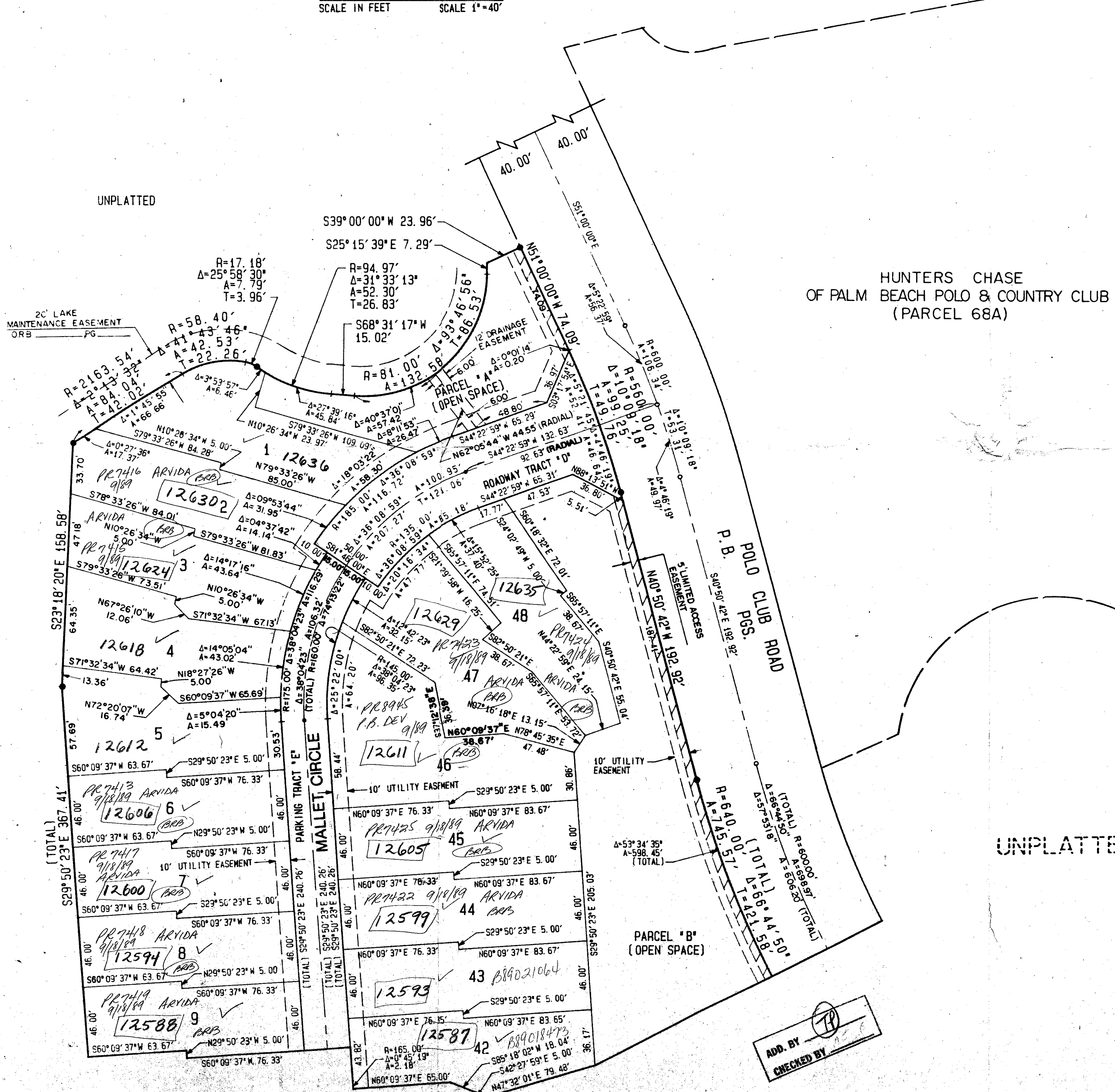
GEE & JENSON
ENGINEERS - ARCHITECTS - PLANNERS, INC.
WEST PALM BEACH, FLORIDA
MARCH 1989



STATE OF FLORIDA
COUNTY OF PALM BEACH
This plat was filed for
record at _____ M. this _____ day
of _____ 1989, and duly
recorded in Plat Book No. _____
on Pages _____ thru _____
JOHN B. DUNKLE
Clerk Circuit Court
By: _____ C. C.

Chukker Cove of P.B. Polo & Country Club
SUBDIVISION *Polo & Country Club
PAGE 164
FLOOD MAP # 100B
FLOOD ZONE B
ZONING # R-32
ZIP CODE 33414
742-728
Dover, CO. 80000

COMPUTED D. BACHOR
DRAWN D. BACHOR
CHECKED J.L.D.
APPROVED [Signature]



MATCH LINE SEE SHEET 3

ADD. BY [Signature]
CHECKED BY [Signature]

0332-082
Pet. 86-32
Parcel 68A Wellington P.O.D.
63/164

CHUKKER COVE OF P.B. Polo & C.C.